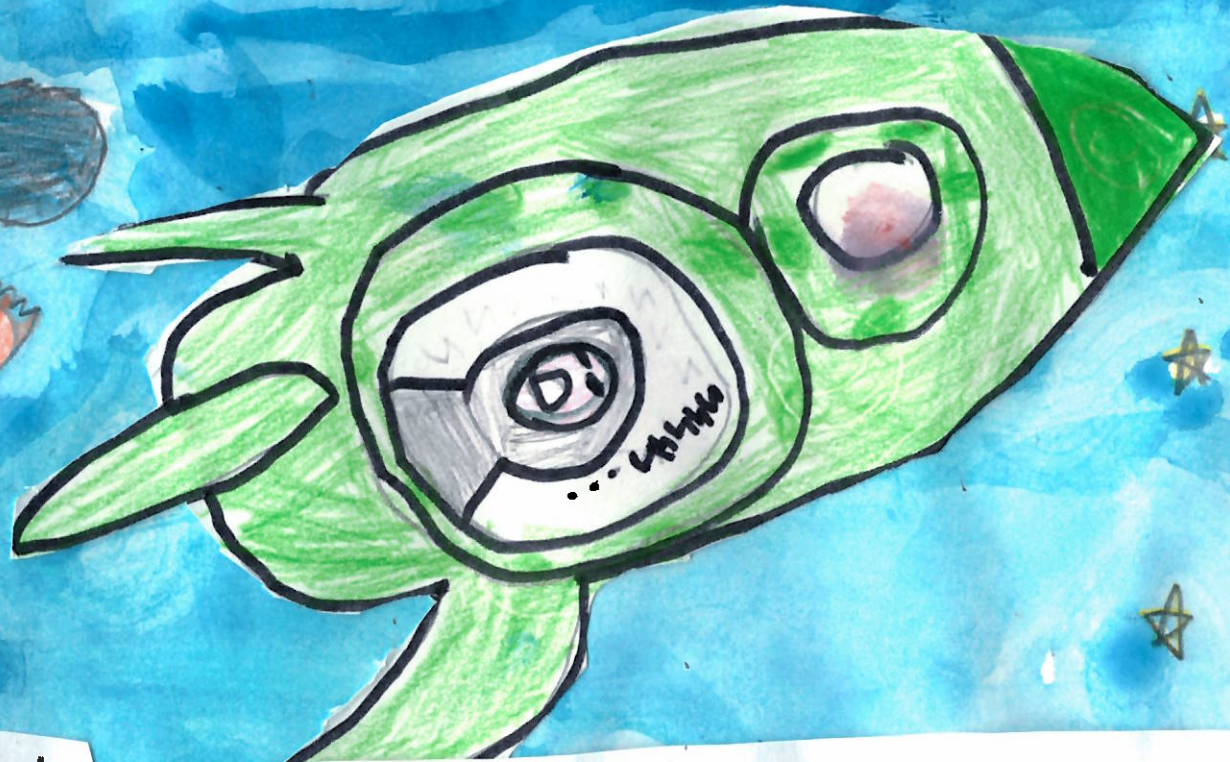


Sim Salalar

A vibrant watercolor illustration featuring a globe in the center. The globe is rendered with various shades of blue, green, and yellow, suggesting different continents and oceans. Overlaid on the globe is the text 'Sim Salalar' in a stylized, hand-drawn font. The letters are filled with a light blue or green color and have a darker blue outline. The background is a complex, abstract composition of watercolor washes in dark blue, black, red, purple, and yellow, creating a rich, textured effect. The overall style is artistic and expressive.

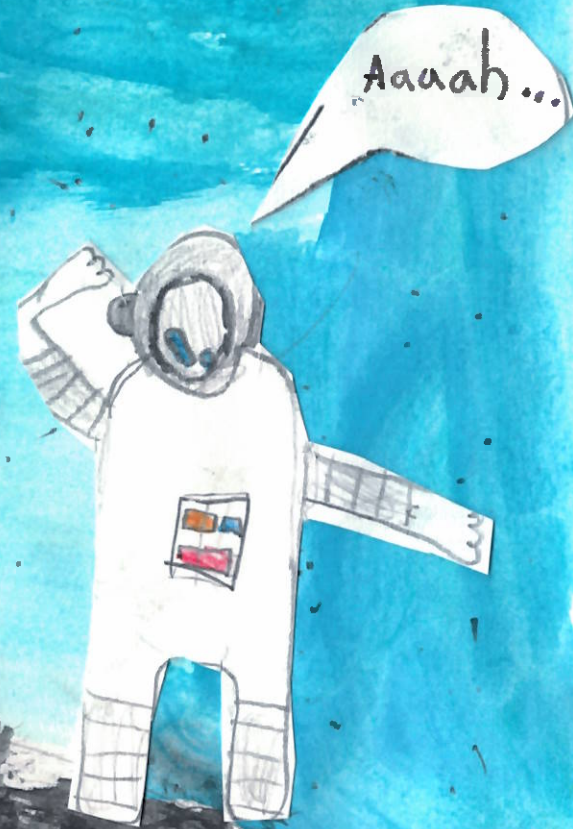
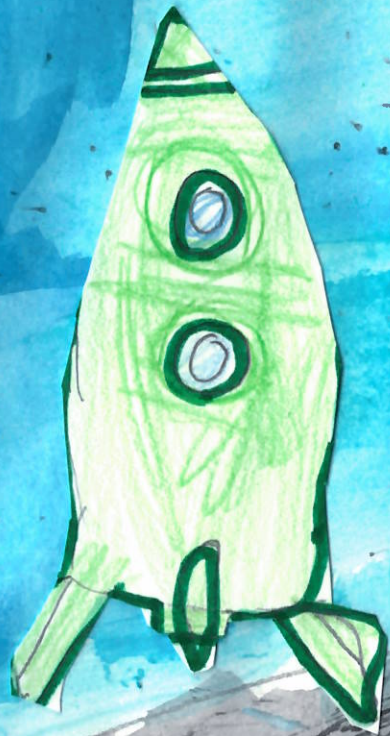
Hi havia una vegada
un astronauta que viatjava



dins del seu coet
de color verd

TORNAVA AL PLANETA TERRA MOLT AVORRIT
I ES VA VA QUEDAR ADENT.

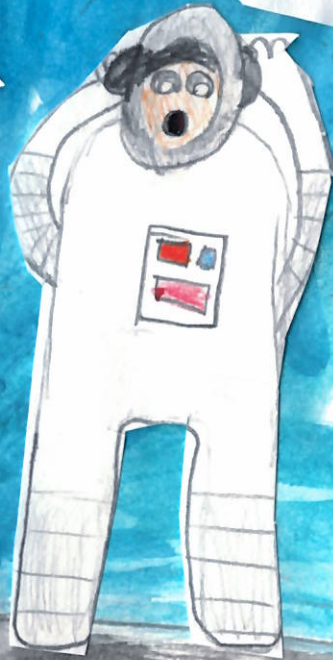
Després de molt somiar,
en un planeta secret es va despertar.

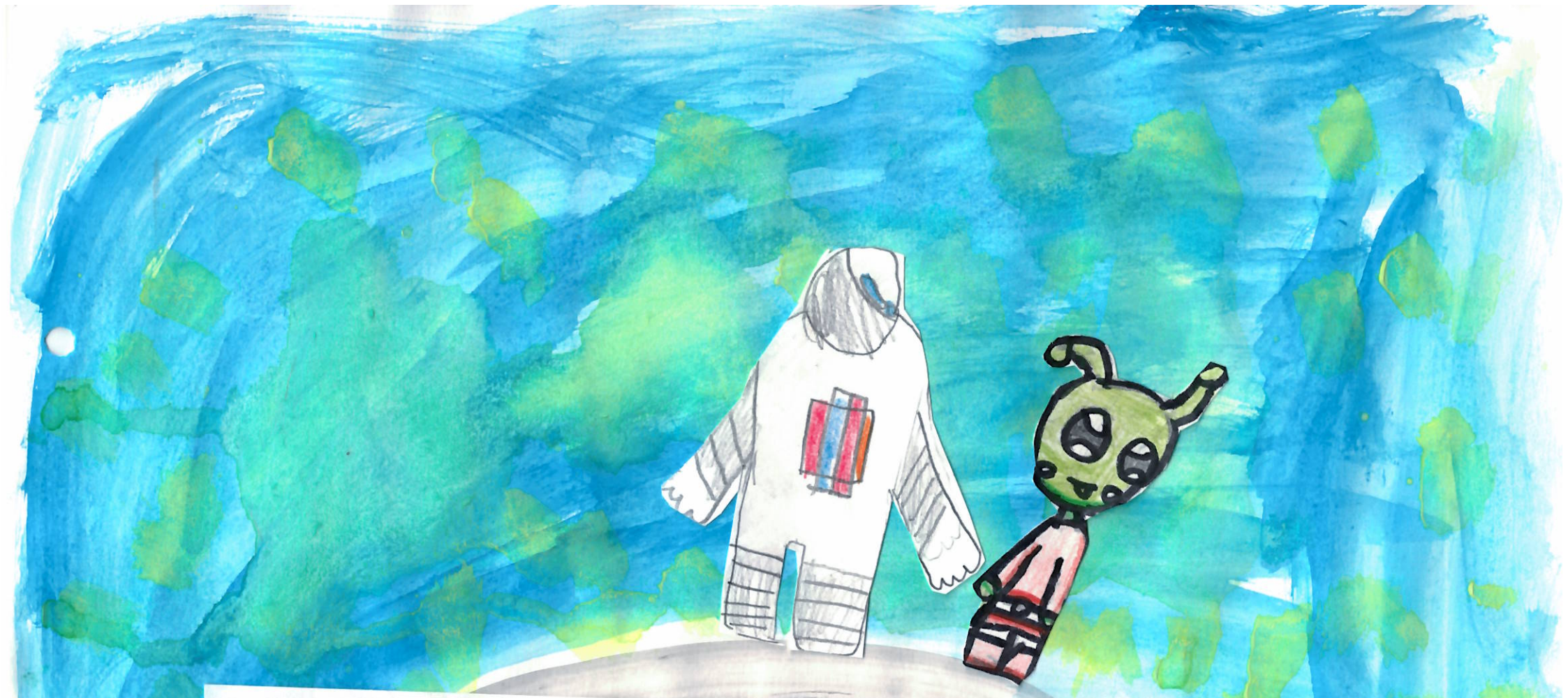


L'ASTRONAUTA AL LUCINA

QUAN VE V QUE NO T'É PENZIN.

PUF PUF





com queno pot tònnou
SUNT a explorar
LES trobol un mancià.

- Què fas aquí? li diu el Marcia.
- Voia anar a la Terra; noni PUC arribar.



- Ara Soc aquí perdut
perquè tornam ho ne podem

LAI MEU POBLE t'acompanyaré
i els meus amics et presentaré
entre tots t'ajudarem a trobar
la manera de tornar.



AI PODIAT HA ARRIBAT
I LA REINA MAREIABA, I HA AJUDAT

SINGALAPIM

Per a tornar a casa hauràs de dir
SINGALAPIM



De sobte una potter màgica arrencix
i un omi cap a sa terra
finalment s'astorcuta per fofat es
constreix, desafreix.



Conte contat, conte acabat.

ESCOLA PAU VILA HOSPITALET DE LOBREGAT

2n - A